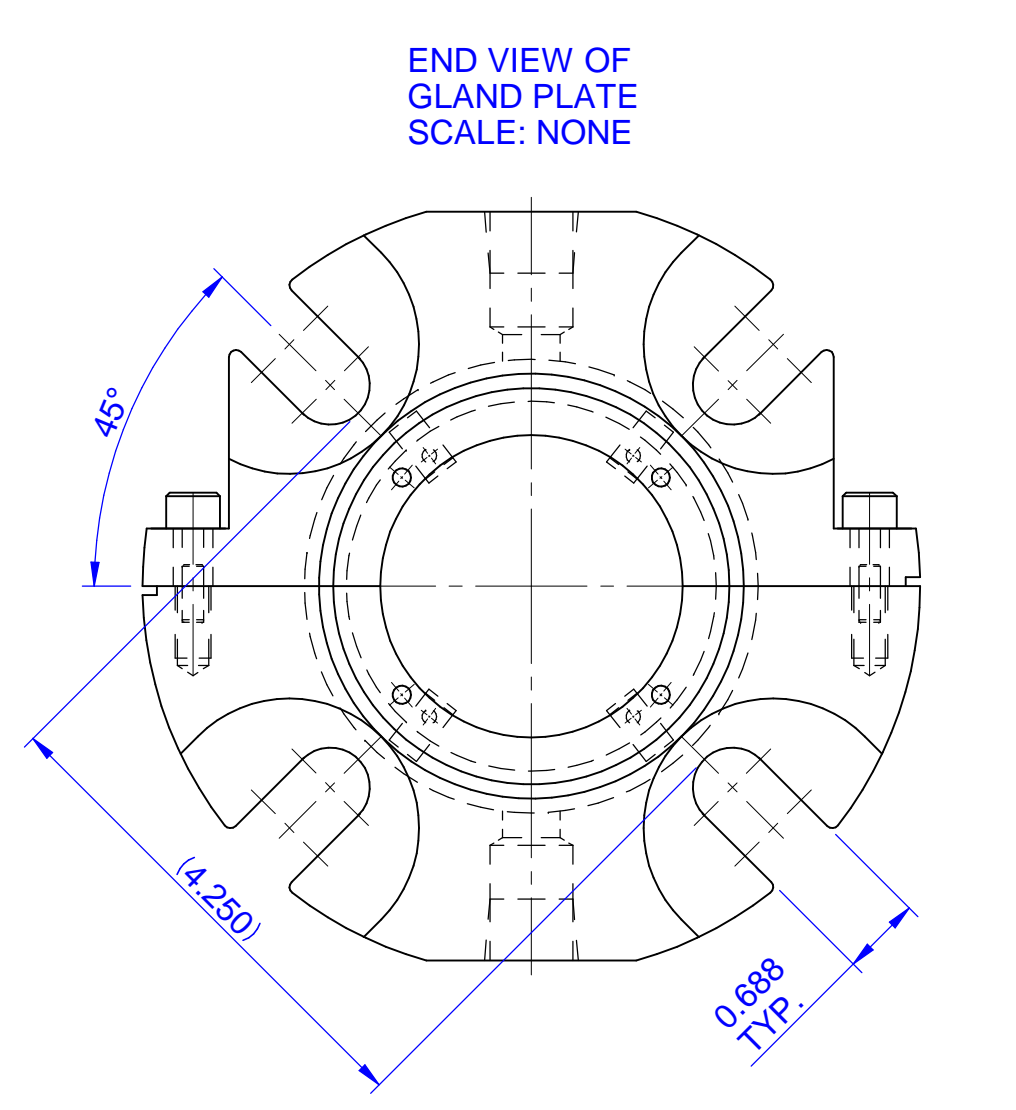
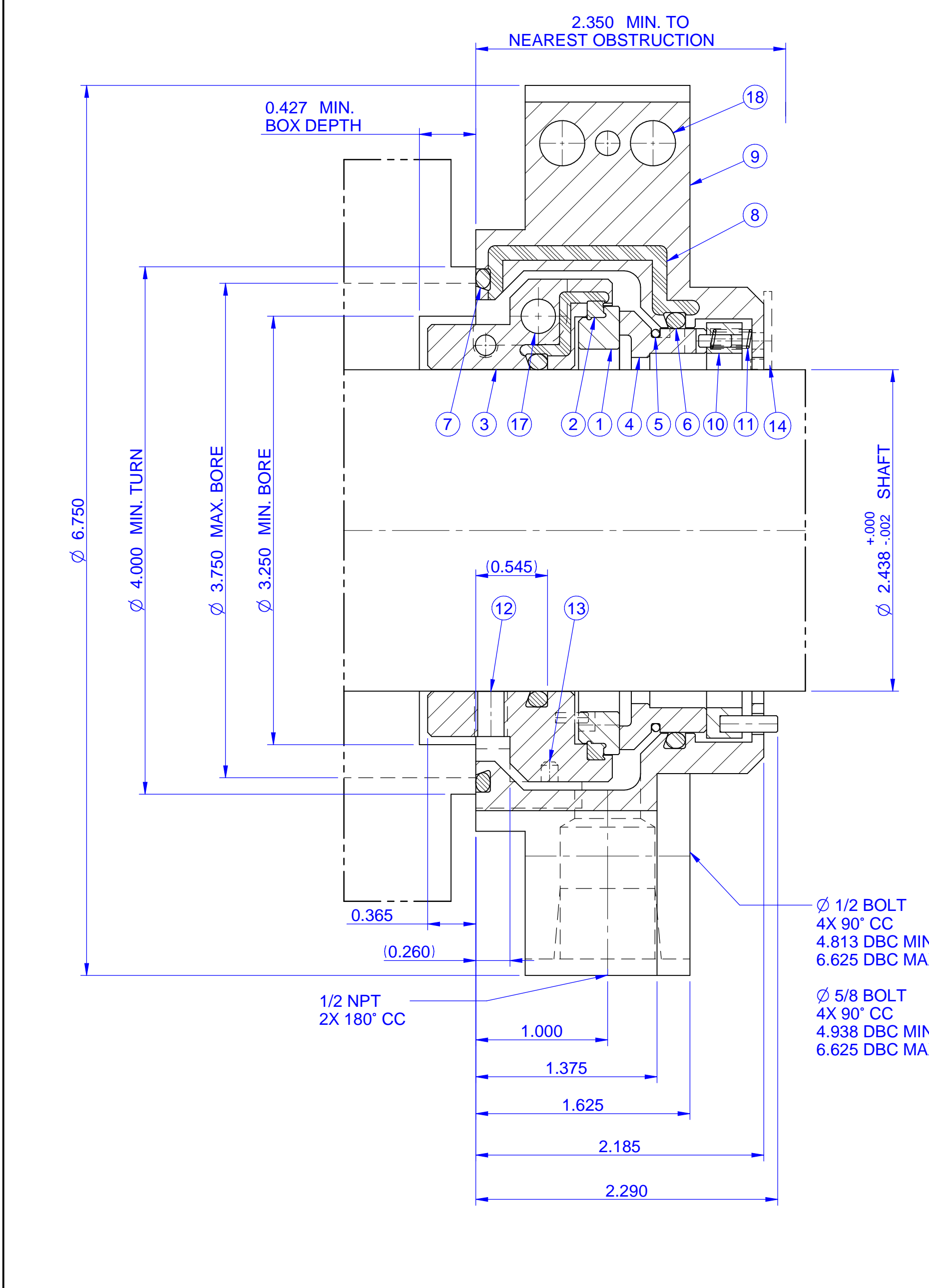


ITEM	COMPONENT	DESCRIPTION	MATERIAL	SPARES	
				QTY	X
1	TAB 1580 0635 9237	MATING RING	SILICON CARBIDE	1	X
2	C37 2437 1002 4031	SEALING ELEMENT	FLUOROELASTOMER	2	X
3	C37 2437 1001 0550	MATING RING ADAP. ASS'Y.	316 S.S.	1	
4	TAB 1583 0635 9237	PRIMARY RING	SILICON CARBIDE	1	X
5	TAB 1712 0635 0825	RETAINING RING	ALLOY X-750	1	X
6	TAB 1588 0635 0794	O-RING (SPLIT)	FLUOROELASTOMER	2	X
7	TAB 1589 0635 0794	O-RING (SPLIT)	FLUOROELASTOMER	2	X
8	C37 0000 1025 4031	GASKET	FLUOROELASTOMER	2	X
9	C37 2500 1020 0550	GLAND PLATE ASS'Y.	316 S.S.	1	
10	C37 2500 1019 0550	SPRING ADAP. ASS'Y SET	316 S.S.	1	
11	10429	SPRING	ALLOY C-276	16	X
12	1125 2004 000 0550	SET SCREW	316 S.S.	4	X
13	C37 0000 1021 0729	SETTING SPACER	ACETAL PLASTIC	2	X
14	C37 0000 1023 0731	CENTERING SPACER	ACETAL PLASTIC	4	X
15	D 0501 039 0550	1/2 NPT PIPE PLUG *	316 S.S.	2	
16	M173851	INSTALLATION KIT *	A37 0000 1004	1	X



* NOT SHOWN

ASSEMBLY COMPONENTS			
17	H 0000 3393 0550	CAP SCREW	PART OF ITEM 3
18	H 0000 3079 0550	CAP SCREW	PART OF ITEM 9

REPAIR KIT # M179777

WARRANTY APPLIES TO
DIMENSIONAL DATA ONLY -
COMPLETE SERVICE DATA WAS
NOT SUPPLIED

SEAL ASS'Y NO.	BILL OF MATERIALS NUMBER	
	COMPLETE	M179774
MTG.RG.ASS'Y NO.	SEAL HD.	
	MTG.RG.	
	ASS'Y	NUMBER
EQUIPMENT REFERENCE		CUSTOMER INFORMATION:
UNIT BY: GOULDS		CUSTOMER: BIG RIVERS ELECTRIC CORP.
EQUIPMENT TYPE:		P.O.NO. 151502
<input checked="" type="checkbox"/> PUMP <input type="checkbox"/> AGITATOR		END USER:
<input type="checkbox"/> COMPRESSOR <input type="checkbox"/> OTHER		LOCATION:
MODEL / SIZE VIT		REQ.NO.
SERIAL NO.		INSTALLED AT:

SEAL DATA			
A.P.I.PLAN	MATERIAL CODE: X23 O92 1 X57 O92 H 316/HC		
A.P.I.CODE			
SERVICE DATA			
FLUID ASH SLUICE WATER	BARRIER FLUID		
SEAL PRESSURE	SUCT.PRESS.	VISC.AT P.T.	
TEMPERATURE	DISCH.PRESS. 135 PSIG	V.P.AT P.T.	
SHAFT SPEED 1750 RPM	SP.GR.		

REFERENCE DATA					
E.P.# 4888-US01	DRAWN	DATE	CHK'D	APP'D	SCALE
R.D.# 812255-39N3	WWY	102309	WWY	BKB	1.375:1
HSP-1036384-5	FILE REFERENCE	CAT	DRAWING No.		
	US01EN	C	GA-100017-1		
CAD ENGINEERED			ISSUE		
			B		

SEAL SIZE: **Ø2.500 (FOR Ø 2.438 SHAFT)**
SEAL TYPE: **3740 SINGLE PACKAGE**

THESE COMMODITIES, TECHNOLOGY OR SOFTWARE ARE EXPORTED FROM THE UNITED STATES IN ACCORDANCE WITH THE EXPORT ADMINISTRATION REGULATIONS. DIVERSION CONTRARY TO U.S.LAW PROHIBITED.

JOHN CRANE INC.
International Sealing Systems
6400 Oakton Street
Morton Grove, IL 60053, U.S.A.

- THE FOLLOWING NOTES ARE IMPORTANT AND MUST BE OBSERVED FOR CORRECT SEAL INSTALLATION AND OPERATION
- REMOVE ALL SHARP EDGES ON SHAFT AND/OR SLEEVE BEFORE INSTALLATION OF SEAL.
 - SURFACE OF SHAFT OR SLEEVE ON WHICH SEAL IS INSTALLED MUST BE MACHINED TO FINISH OR BETTER.
 - MUST BE CIRCULATED AROUND PRIMARY RING (SEAL FACE) THROUGH MATING RING (SEAT) (AT NOT LESS THAN) IN ORDER TO REMOVE HEAT GENERATED, OR FAILURE MAY OCCUR.
 - WHEN SHAFT IS SLEEVED THROUGH STUFFING BOX, SLEEVE MUST BE LIQUID TIGHT THROUGH BORE.
 - SHAFT OR SLEEVE MUST BE CORROSION RESISTANT MATERIAL WITH A HARDNESS OF 200 TO 250 HRC. SURFACES TO BE MACHINED TO DIMENSIONS & TOLERANCES STATED.
 - END OF SEAL CHAMBER & AXIS OF SHAFT MUST BE AT 90° TO EACH OTHER WITHIN F.I.M.
 - BEFORE COMPLETING SEAL INSTALLATION WIPE LAPPED SURFACES OF MATING RING (SEAT) & PRIMARY RING (SEAL FACE) PERFECTLY CLEAN.
 - VENT GAS ENTRAPMENT BEFORE STARTUP.
 - ALL SHOULDERS OVER WHICH SEAL MUST PASS WHEN FITTING, TO BE PREPARED AS DIAGRAM BELOW.
-