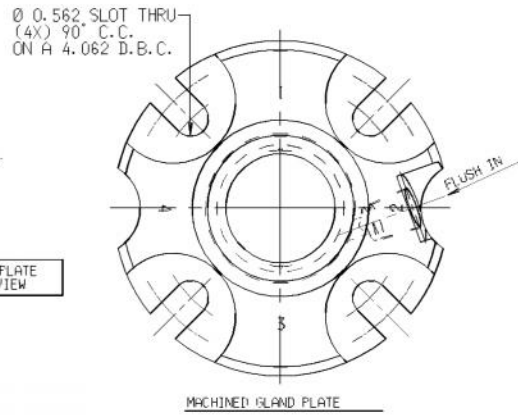
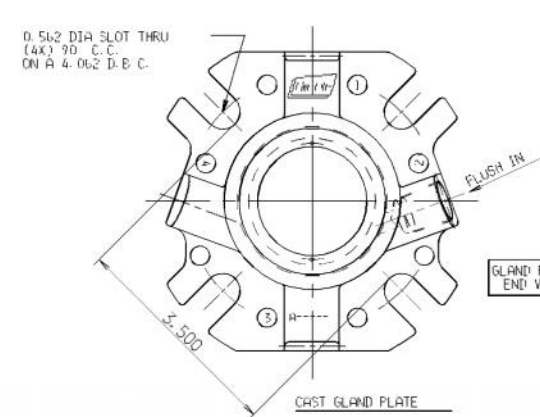


13. SPACER (ITEM #17) IS ONLY FOR THE PURPOSE OF PROPERLY LOCATING SEAL. AFTER GLAND PLATE, BEARING, SHAFT AND SEAL ARE LOCKED IN PLACE, SPACER MUST BE REMOVED BEFORE STARTING UNIT.  
 14. COOLING RECOMMENDATION: PROVIDE A FLUSH OF SUITABLE LIQUID TO THE SEAL



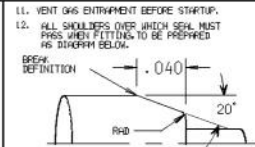
FOR ALTERNATE ARRANGEMENTS SEE THE FOLLOWING DRAWINGS

SINGLE O-RING SEAL	HSP-38057
RUBBER BELLOWS SEAL	HSP-38061
METAL BELLOWS SEAL	HSP-38063
O-RING SEAL W/QUENCH	HSP-38058
RUBBER BELLOWS W/QUENCH	HSP-38062
METAL BELLOWS W/QUENCH	HSP-38064
DUAL O-RING SEAL	HSP-38059
DUAL METAL BELLOWS WITH PUMPING RING	HSP-38066
DUAL O-RING SEAL W/PUMPING RING	HSP-38060
DUAL METAL BELLOWS	HSP-38065

NOTE: CAST GLAND DESIGNED TO FIT COOLING JACKETS ON STANDARD PUMPS.

THE FOLLOWING NOTES ARE IMPORTANT AND MUST BE OBSERVED FOR CORRECT SEAL INSTALLATION AND OPERATION

- REMOVE ALL SHARP EDGES ON SHAFT &/OR SLEEVE BEFORE INSTALLATION OF SEAL.
- SURFACE OF SHAFT OR SLEEVE ON WHICH SEAL IS INSTALLED MUST BE MACHINED TO FINISH OF BETTER.
- LUBRICATE SHAFT/SLEEVE & SEAL MATE RING/O-RING/BELLOWS TO ASSIST INSTALLATION OF SEAL WITH.
- LUBRICATE MATING RING (SEAL), SEALING MEMBER & HOUSING TO ASSIST INSTALLATION.
- MUST BE CIRCULATED AROUND PUMPING RING (SEAL FACE) THROUGH MATING RING (SEAL) IN ORDER TO REMOVE HEAT GENERATED BY FAILURE INY OCCUR. (AT NOT LESS THAN)
- WHEN SHAFT IS SLEEVED THROUGH STUFFING BOX, SLEEVE MUST BE TIGHT THROUGH BORE.
- SHAFT OR SLEEVE MUST BE OF CORROSION RESISTANT MATERIAL WITH A HARDNESS OF 125 BRINELL MINIMUM & BE FINISHED TO DIMENSIONS & TOLERANCES SHOWN.
- END OF SEAL CHAMBER & AXIS OF SHAFT MUST BE AT 90° TO EACH OTHER WITHIN F.I.M. .002
- PRESSURE IN SEAL CHAMBER MUST BE MAINTAINED AT MINIMUM ABOVE MAXIMUM PRESSURE DEVELOPED AT OTHER SEAL.
- BEFORE COMPLETING SEAL INSTALLATION WIRE LAPPED SURFACES OF MATING RING (SEAL) & PUMPING RING (SEAL FACE) RESPECTIVELY CLEAN.



ITEM	COMPONENT	DESCRIPTION	MATERIAL	SPARES	QTY
1	H 1375 872	MATING RING		1	X
2	0000 030	O-RING		1	X
3	##	PRIMARY RING		1	X
4	D 1500 278	BELLOWS		1	X
5	D 1500 725	DISC		1	X
6	D 1500 714	RETAINER		1	
7	D 1500 088	DRIVE BAND		1	
8	D 1502 364	SPRING ADAPTER		1	
9	###	SPRING		1	X
10	H 1375 950	GASKET		1	X
11	AUS1 43XX XX2	SNAP RING		1	X
12	0000 220	O-RING		1	X
13	H 1375 903	SLEEVE		1	
14	H 1375 888	COLLAR		1	
15	L710 3206 000	SET SCREW		4	X
16	####	GLAND PLATE		1	
17	D 0002 684	SPACER		4	X
18	2108 3206 000	SOCKET HEAD CAP SCREW		4	X
19					
20					
21					
22					
23					
24					
25					
26					
27					
28					
29					
30					
31					
32					
33					
34					
35					

## D-1500-184 (CHFCBN)  
 D-1501-270 (MACHINED)  
 D-1501-779 (F40)  
 ### 2468 (316 SS)  
 2475 (MONEL)  
 0701 (18-8 S.S.)  
 7353 (20CB-3 S.S.)  
 7588 (TITANIUM)  
 #### H-1375-951 CAST GLAND PLATE  
 H-1375-997 MACHINED GLAND PLATE

SEAL ASS'Y NO.	BILL OF MATERIALS NUMBER
IN- D-1502-471	COMPLETE
OUT-	SEAL HD.
MTR. RS. ASS'Y NO.	MTG. RS.
IN-	ASS'Y.
OUT-	ITEMS NUMBER

EQUIPMENT REFERENCE:	CUSTOMER INFORMATION:
UNIT BY:	CUSTOMER:
EQUIPMENT TYPE:	P.O. NO.
<input type="checkbox"/> PUMP <input type="checkbox"/> AGITATOR	END USER:
<input type="checkbox"/> COMPRESSOR <input type="checkbox"/> OTHER	LOCATION:
MODEL/SIZE	REQ. NO.
SERIAL NO.	INSTALLED AT:

SEAL DATA	
SEAL DESCRIPTION	MATERIAL CODE
PAR.3	
A.P.T. CODE	A.P.T. PLAN

SERVICE DATA			
FLUID	BARRIER FLUID		
SEAL PRESS.	SUCT. PRESS.	VISC. AT P.T.	
TEMPERATURE	DISCH. PRESS.	V.P. AT P.T.	
SHAFT SPEED	SP. GR.	HAZARD CODE	
REFERENCE DATA			
DRAWN	DATE	CHK'D	APP'D
SN	090696	JWH	DWA
FILE REFERENCE	CAT	DRAWING No.	
MO-01	D	H-SP-38061	
INST CODE			
SCALE	2:1		

CAD ENGINEERED

SEAL SIZE: Ø 1.375  
 SEAL TYPE: T-5811 BIG BORE VERSION

**JOHN CRANE INC.**  
 International Sealing Systems  
 6400 Oakton Street  
 Marton Grove, IL 60053, U.S.A.