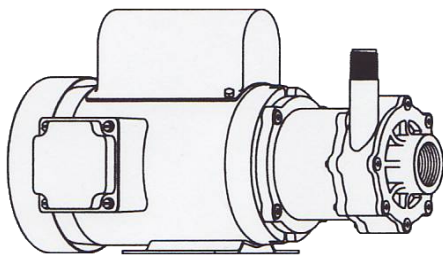




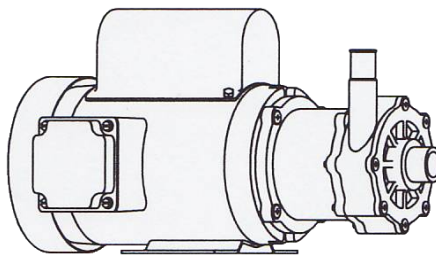
MARCH PUMPS

1819 PICKWICK AVE., GLENVIEW, IL 60026-1306, U.S.A
PHONE: (847) 729-5300 - FAX: (847) 729-7062
WWW.MARCHPUMP.COM

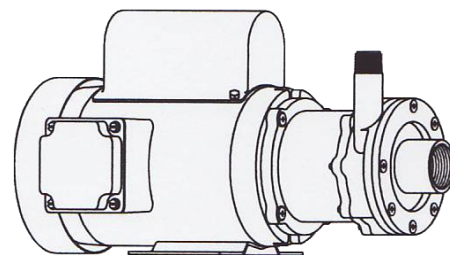
TE-5C-MD
TE-5A-MD
TE-5K-MD
TE-5S-MD



TE-5C-MD/TE-5K-MD



TE-5A-MD



TE-5S-MD

GENERAL RATINGS & SPECIFICATIONS

MODEL	Max Flow	Max Head	Inlet	Outlet	Max Internal Pressure	Max Liquid Temperature	Height	Width	Length	Pack Weight
TE-5C-MD	18 gpm	29 ft. 12.5 psi	1" FPT	1/2" MPT	50 psi	190°F	7.19 in	8.02 in	13 in	15.5 lbs
TE-5A-MD			1" OD	3/4" OD					13.56 in	
TE-5K-MD			1" FPT	1/2" MPT	75 psi	200°F			13 in	18 lbs
TE-5S-MD					200 psi	250°F			13.31 in	

MODEL ABBREVIATIONS:

TE = Totally Enclosed Fan Cooled Motor

MD = Magnetic Drive

5C/5K/5S = Threaded Inlet/Outlet, 5A = Smooth Inlet/Outlet

S = Stainless, K = Kynar, C/A = Polypropylene.

PUMP CONSTRUCTION & SERVICING:

March "Orbital" Magnetic Drive Pumps eliminate the conventional shaft seals found in most pumps. This means that there is no rotating shaft or seal to wear and allow the liquid being pumped to leak out. The only seal in the pump is a stationary Viton "O" ring seal between the Cover and the Rear Housing.

The pump can be serviced with the use of a screwdriver. The only moving part in the pump other than the motor is the Impeller-Magnet Assembly which rotates on a stationary ceramic spindle and up against a ceramic thrust washer. These are the only parts that might wear, and may require replacement. See the Repair Parts list for replacement parts.

OPERATION:

Pumps are not self priming and will not produce a suction lift and must be installed with a positive flooded suction. The pump should not run dry for long periods of time, as we rely on the liquid being pumped to lubricate the impeller-magnet assembly spinning on the stationary spindle. Teflon Filled and Carbon bushings are available upon special order. Contact the factory for special applications.

ELECTRICAL:

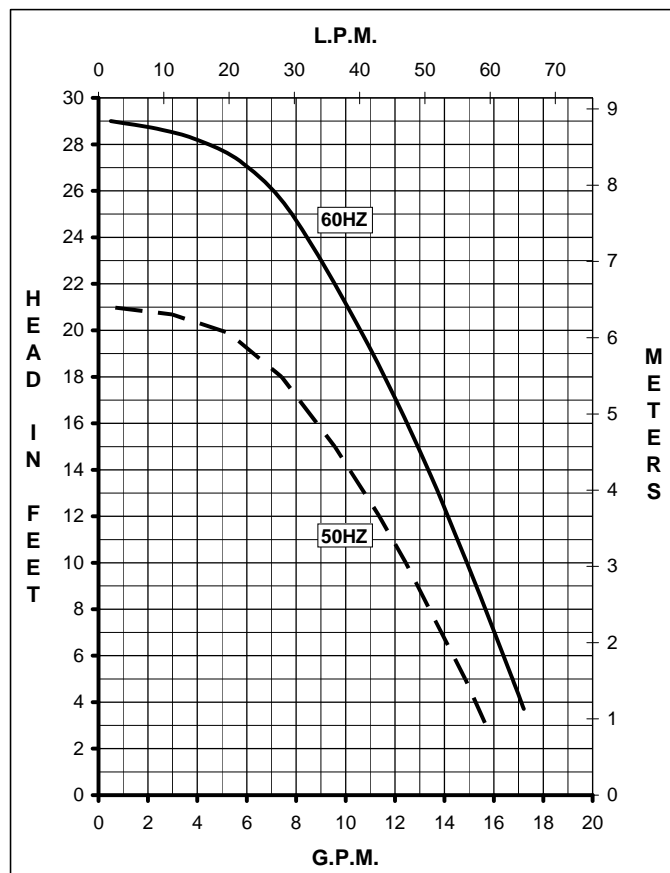
The standard pump has a 115/230 Volt, 50/60 Cycle, 1 Phase, A.C. Motor. The motor is totally enclosed with an external fan.

A junction box is located on the side of the motor with instructions for the proper electrical hook-up.

The motor is thermally overload protected and designed for continuous running.

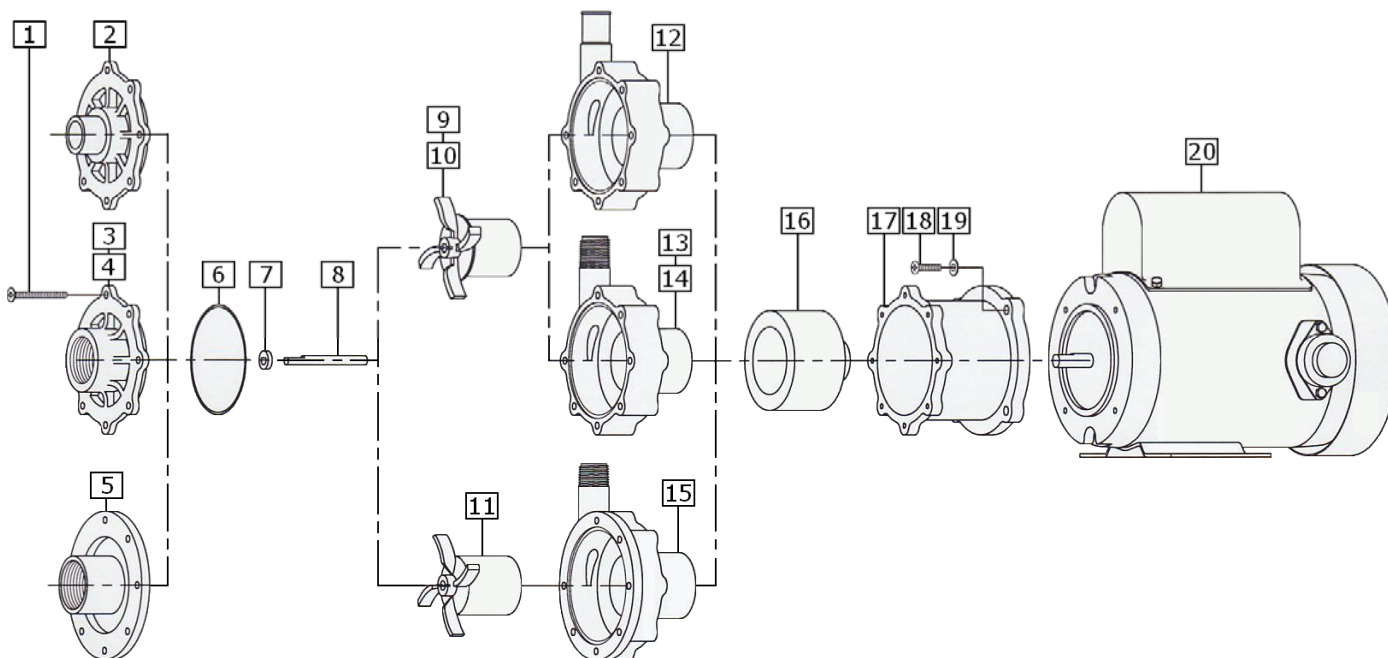
NOTES:

All specifications & data are based on pumping water and are intended for use as a guideline only. Ratings may vary depending on the current motor being used.



MOTOR RATINGS & SPECIFICATIONS

Volts	Hz	Ph	Hp	RPM	Watts	Amps	Electrical Connection
115	60	1	0.2	3450	255	2.1	Conduit Box
230						1.05	
110				2850	177	2.2	
220	50					1.1	



NOTE:

When attaching the Drive Magnet Assembly (item 16) to the motor shaft, position the face of the Drive Magnet Assembly 3/32 inch below the face of the Motor Bracket (item 17).

REPAIR PARTS LIST

ITEM	DESCRIPTION	MATERIAL	QTY	PART NO.	USED IN
1	Screw #8-32 X 1-3/4" Lg.	Stainless Steel	7	0150-0021-1000	All
2	Cover (1"OD Inlet)	Polypropylene	1	0150-0150-1000	TE-5A-MD
3	Cover (1"FPT Inlet)	Polypropylene	1	0150-0032-1000	TE-5C-MD
4	Cover (1"FPT Inlet)	Kynar	1	0150-0124-1000	TE-5K-MD
5	Cover (1"FPT Inlet)	316 Stainless Steel	1	0150-0111-0000	TE-5S-MD
6	"O" Ring	Viton	1	0135-0023-1000	All
7	Thrust Washer	Ceramic	1	0130-0028-1000	All
8	Shaft	Ceramic	1	0130-0024-1000	All
9	Impeller Assembly	Polypropylene	1	0150-0098-0200	TE-5C/5A-MD
10	Impeller Assembly	Kynar	1	0150-0125-0200	TE-5K-MD
11	Impeller Assembly w/Bushing	316 St'less w/Carbon Bushing	1	0150-0114-0400	TE-5S-MD
12	Rear Housing w/Thrust Washer (3/4" OD Outlet)	Polypropylene	1	0150-0159-0100	TE-5A-MD
13	Rear Housing w/Thrust Washer (1/2" MPT Outlet)	Polypropylene	1	0150-0031-0100	TE-5C-MD
14	Rear Housing w/Thrust Washer (1/2" MPT Outlet)	Kynar	1	0150-0123-0100	TE-5K-MD
15	Rear Housing (1/2" MPT Outlet)	316 Stainless Steel	1	0150-0110-0000	TE-5S-MD
16	Drive Magnet Assembly	Polypropylene	1	0150-0176-0300	All
17	Motor Connecting Bracket	Polypropylene	1	0150-0070-0100	All
18	Screw #10-32 x 3/4" Lg.	Stainless Steel	4	0150-0050-1000	All
19	Washer, Flat #10	Stainless Steel	4	0150-0051-1000	All
20	Motor - TEFC -115/230 Volt - 50/60 Hz		1	0150-0090-1000	All

NOTE: Contact factory for other materials and/or parts not listed.

MATERIALS IN CONTACT WITH SOLUTION:

For TE-5C-MD & TE-5A-MD: Polypropylene, Viton, Ceramic

For TE-5K-MD: Kynar/Carbon Filled, Viton, Ceramic

For TE-5S-MD: 316 Stainless Steel, Viton, Ceramic, Carbon

LIMITED WARRANTY:

March pumps are guaranteed only against defects in workmanship or materials for a period of one year from date of manufacture pumping water. On all other solutions, contact the factory for application assistance. March Pump Application Worksheet 0750-0130-1000 is available for additional warranty information.